

# Shades

Ordered with fixtures with MR16 lamp only. Do not make multiple selection per lamp head.

## Cap *Perforated & Solid metal Cap*

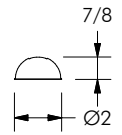


PC (MC/BN)

PCB

SC (MC/BN)

SCB



## Cone *Perforated & Solid metal Cone*



PM (MC/BN)

PMB

SM (MC/BN)

SMB

## Glass *Amber, blue, clear and frosted*



AM

BL

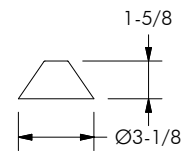
FR

## Ceramic Cone *No pattern & Stripe pattern*



NP

SP

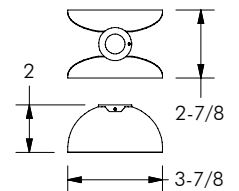


## Arc *Mesh & Translucent arc*



MA (MC/BN)

TA



# Accessories

Ordered with fixtures using MR16 lamp only. Can select multiple items for each lamp, up to 9/32" thick.

## Holder *LH*



LH

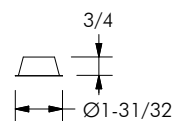
Holder will be added automatically per lamp with accessories.

## Shroud *SH, SHB*



SH

SHB



## Special *BE, CS, IR, MS, UV*



BE

CS

IR

MS

UV

## Louver *ELB*



ELB

